

# Weekly report (2012.10.29~11.4)

## Done

- 1) This week, I reviewed my code to investigate the problem shown in Figure 1(left), it's fixed by changing the order I handle the pixels in the queue(first in last out → first in first out). But I don't take it as a bug. I think the real problem is the method, that detecting different part based on depth(using an absolute threshold), does not work well, cause different parts of a model can have different accuracy, an absolute threshold can't satisfied the whole model.

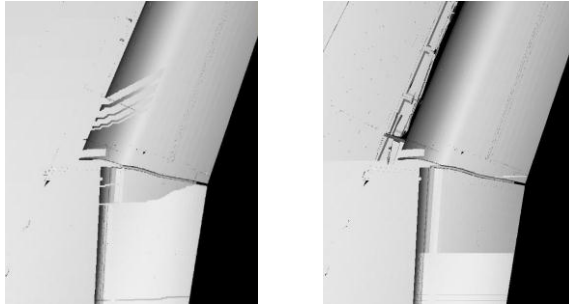


Figure 1

- 2) Sikan has finished an initial version of the parallel visualization framework based on multi-thread, and it's running in a single machine. This week, I start to implement the communication part using MPI. After deployed mpich in my win7 and did some basic experiments, I have finished part of the coding.

## To Do

- 1) Continue implement the communication part of the Meteorology Project.
- 2) More discussion about how to do the detecting.